



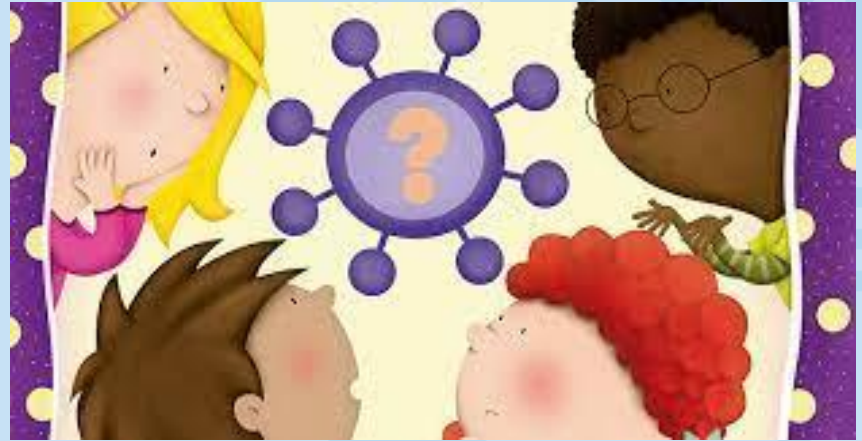
COORDINATED STUDENT HEALTH SERVICES

STUDENT COVID-19 PRESENTATION

2021-2022

STUDENT COVID-19 TRAINING OUTLINE

- ✓ What is Coronavirus and How Does it Spread?
- ✓ Signs and Symptoms of Coronavirus
- ✓ Infection Control Procedures
- ✓ When is Sick too Sick for School?
- ✓ Covid-19 Testing in Schools
- ✓ Questions and Concerns?

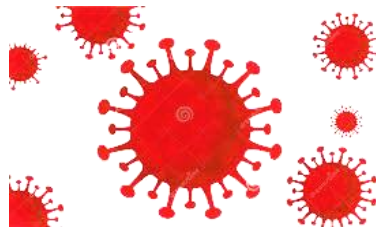


What is Coronavirus "COVID-19 and How Does It Spread?

The coronavirus (or COVID-19) is a newly discovered virus that is making people in many parts of the world sick.



Coronavirus is invisible tiny germs that can spread from one person to another.



The coronavirus is spread through close contact with someone who has the virus, through droplets in the air (from coughing and sneezing), or through touching an infected surface.

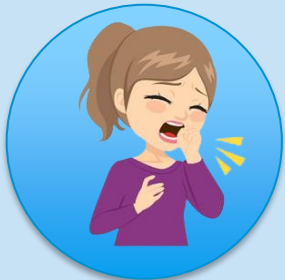
Even if a person doesn't look sick they can still spread the virus.



It is important to remember that this kind of virus can affect **ANYBODY**. It doesn't matter where you or your family comes from.



SIGNS AND SYMPTOMS OF COVID-19



Persistent cough



Shortness of breath



Chills



Sore throat



New loss of taste or smell

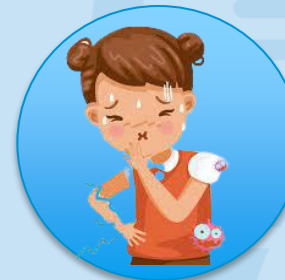


Fever

(Temperature of 100.4 and above)



Headache



Vomiting and diarrhea



Muscle pain



INFECTION CONTROL PROCEDURES IN SCHOOLS

HAND WASHING

- ✓ Wash your hands with soap and water for at least 20 seconds (sing the ABC song)
- ✓ Use hand sanitizer provided throughout the school



PHYSICAL DISTANCING

- ✓ Always stay at least 3 feet away from others
- ✓ Follow floor markers and do not move your seats.



CLEANING AND DISINFECTING

- ✓ Your school will be cleaned daily to remove dirt, germs to slow the spread of COVID-19.



Infection Control Procedures Continued...

- ✓ It is important to wear your face coverings properly to better protect yourself.
- ✓ You can cough and sneeze into your mask, put on a new and clean mask as soon as possible and wash your hands.
- ✓ If you need a new mask, ask your teacher or school nurse.



Infection Control Procedures Continued...

- ✓ Cover your nose and mouth and secure under your chin.
- ✓ Fits snugly against the sides of your face.
- ✓ Do not wear on your forehead.
- ✓ Do not wear on your chin.
- ✓ Do not touch your mask with dirty hands



When Is Sick Too Sick For School

Send me to school if...



- I am healthy and ready to learn!
- I have no signs and/or symptoms of being sick.

AND

- I haven't taken any fever reducing medicine for 24 hours, and I haven't had a fever during that time.

Keep me at home if...



I have any of the following symptoms:

- Fever
- Persistent cough
- Shortness of breath or trouble breathing
- Muscle pain
- Chills
- Loss of taste or smell
- Sore throat
- Vomiting and/or diarrhea
- Headache

Call the doctor if...



- I am having trouble breathing
- I have a temperature higher than 100.4 for more than two days
- I've been throwing up or have diarrhea for more than two days
- I've had the sniffles for more than a week, and they aren't getting better.



COVID-19 Testing in Schools



If you don't feel well while you are in school, a school staff member will come to your classroom and bring you to the nurse in the isolation room



If you have any symptoms of COVID-19, the nurse will assess you, provide care and perform a COVID-19 test for you

The nurse will also contact your parent /guardian on the day of the test.

The nurse will explain everything about the COVID-19 test before doing the test.

The nurse will have to swab your nose and throat.

You will know the results of your test in about 1 hour.



THIS TEST WILL ONLY BE PERFORMED IF YOUR PARENT/ GUARDIAN HAS SIGNED A WRITTEN CONSENT TO AUTHORIZE THE NURSE TO PERFORM THE TEST.



Don't Worry.....

There are a lot of people out there who are working to protect you. It is **NOT** your job to worry.



Nurses



Family



**Teachers/Guidance
Counselors**



Doctors

If there is anything you are confused or worried about, don't be afraid to talk to someone you **TRUST**.





Lori Alhadeff
Patricia Good
Debra Hixon
Donna P. Korn
Sarah Leonardi
Laurie Rich Levinson
Ann Murray
Dr. Rosalind Osgood
Nora Rupert

Dr. Vickie L. Cartwright
Interim Superintendent of Schools

The School Board of Broward County, Florida, prohibits any policy or procedure which results in discrimination on the basis of age, color, disability, gender identity, gender expression, genetic information, marital status, national origin, race, religion, sex or sexual orientation. The School Board also provides equal access to the Boy Scouts and other designated youth groups. Individuals who wish to file a discrimination and/or harassment complaint may call the Director, Equal Educational Opportunities/ADA Compliance Department & District's Equity Coordinator/Title IX Coordinator at 754-321-2150 or Teletype Machine (TTY) 754-321-2158.

Individuals with disabilities requesting accommodations under the Americans with Disabilities Act Amendments Act of 2008, (ADAAA) may call Equal Educational Opportunities/ADA Compliance Department at 754-321-2150 or Teletype Machine (TTY) 754-321-2158.

browardschools.com

